

# Introducing ...

## *Flowers and pollination*



THE UNIVERSITY OF  
WESTERN AUSTRALIA  
*Achieving International Excellence*



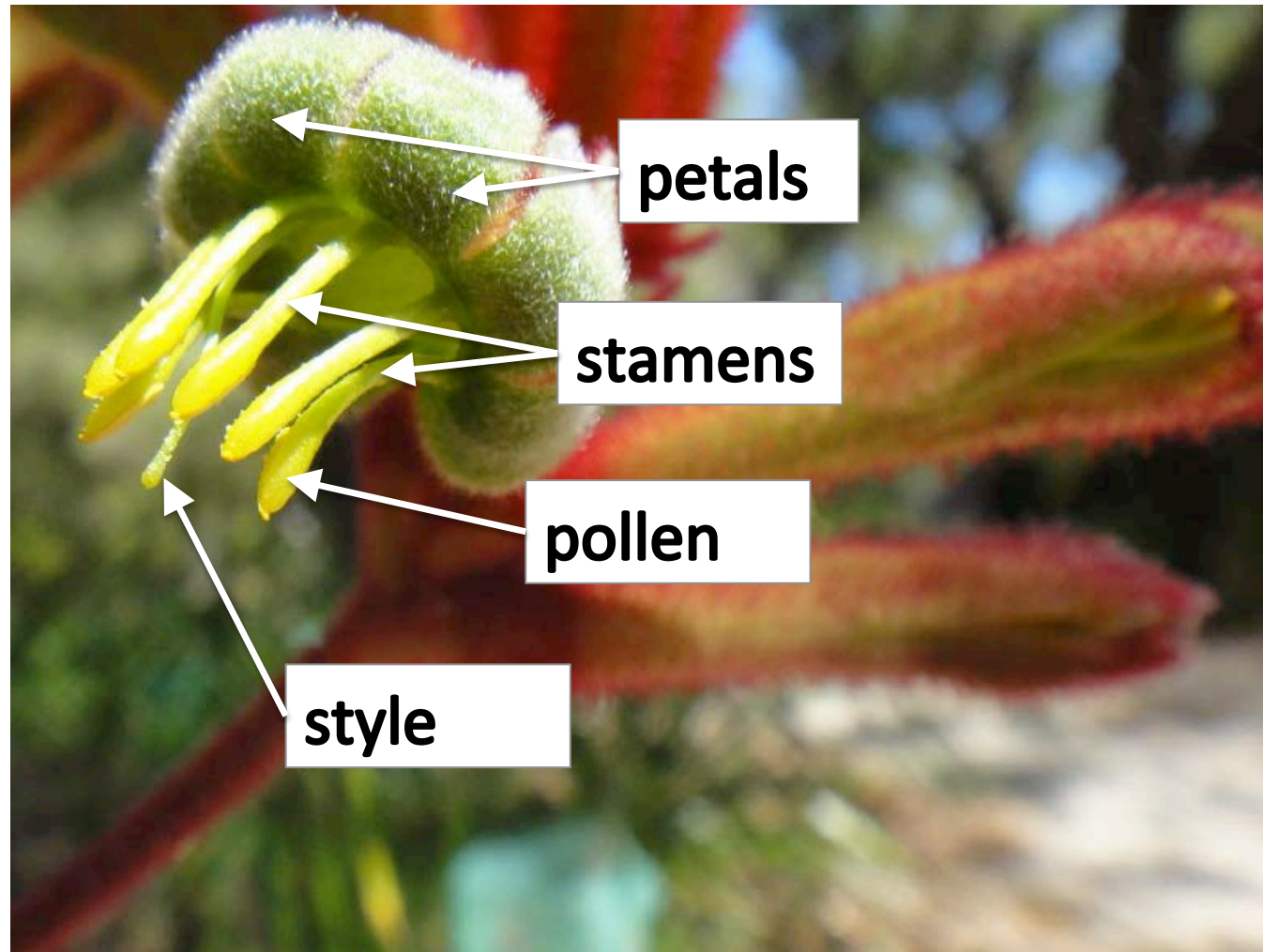
Government of Western Australia  
Department of Education

# Why do you think plants have flowers?



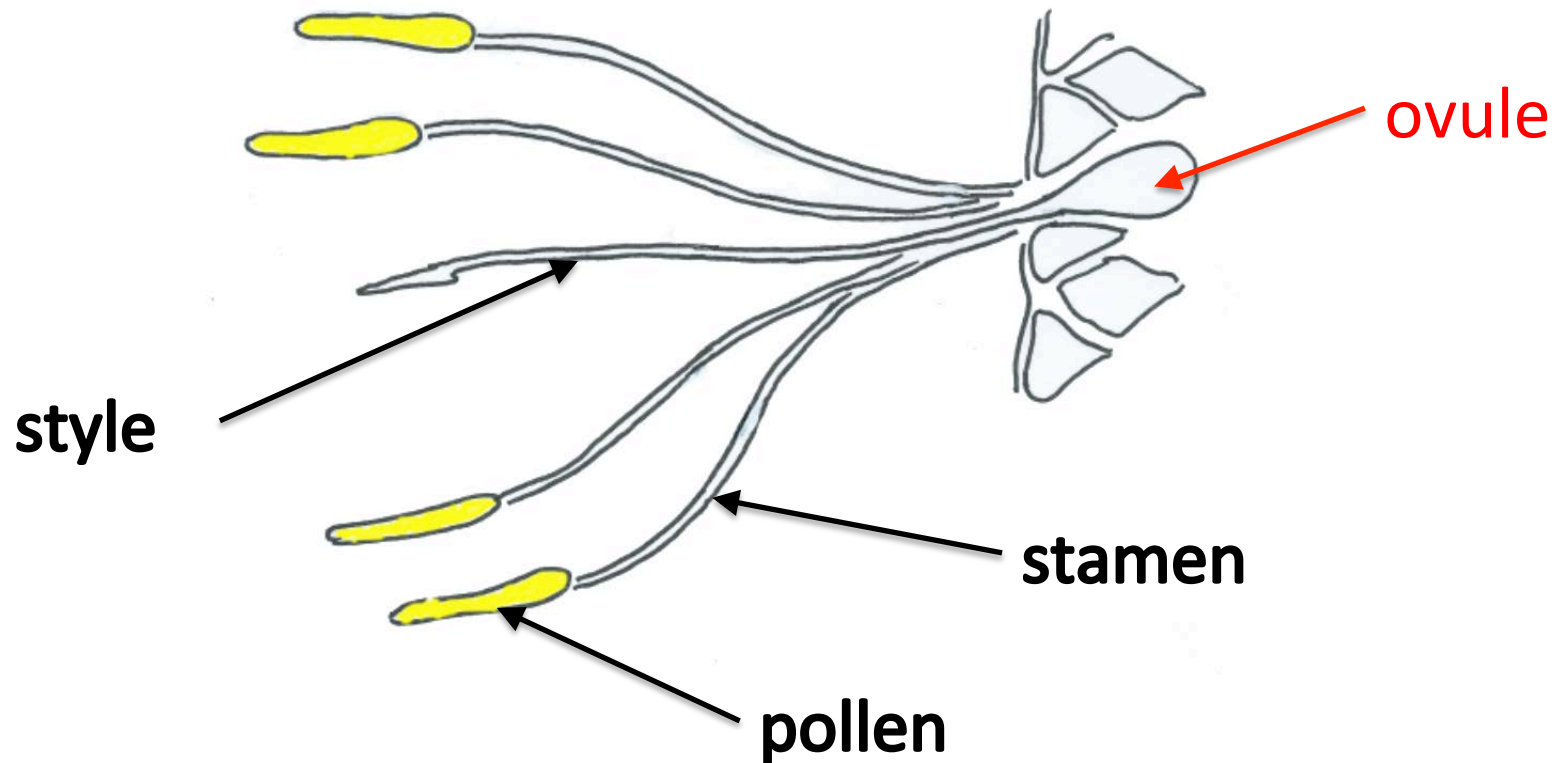
photo: DonBradshaw

# Names of flower parts



# Why do plants have flowers?

Flowers make seeds



single banksia flower





This flowering spike on a banksia has about 2000 flowers.

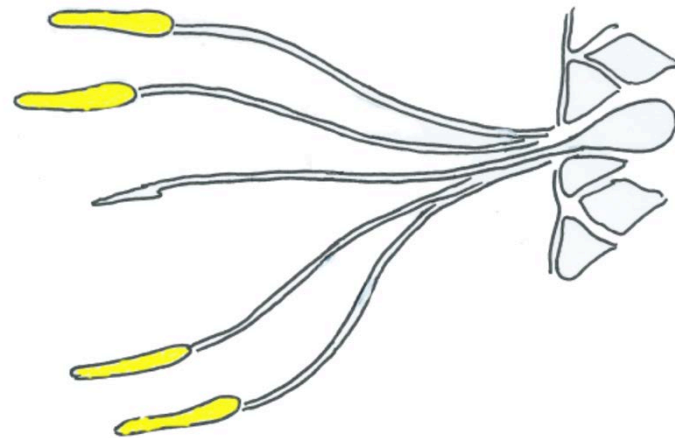


# How do flowers make seeds?

Pollen travels from the stamen of one flower to the style of another flower.

It then burrows down the style to the ovule.

Pollen and ovule join and grow into a seed.





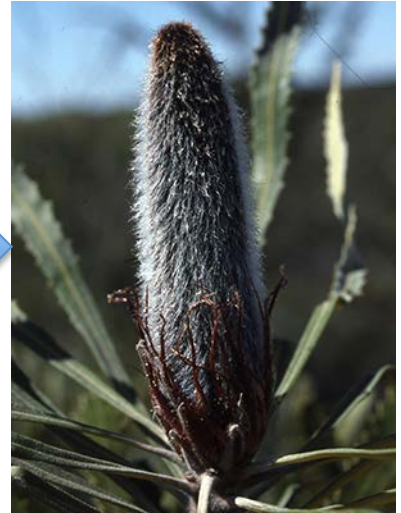
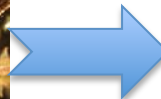
The flowers start to die.

Seeds grow inside a woody seed case, called a follicle.

Follicles are protected in a hard, woody fruit, called a nut.

When seeds are fully grown, the follicles open and seeds fall to the ground.





life cycle of banksia (piara)





How does pollen get from one flower to another?





What carries pollen between  
banksia flowers?

honey possum

photo: Stephen Hopper





What carries pollen between  
gum tree flowers?

bees and wasps



What carries pollen between  
grass tree flowers?

ants

photo: Felicity Bradshaw



What carries pollen between  
grevillea flowers?

**birds**  
(brown honeyeater)

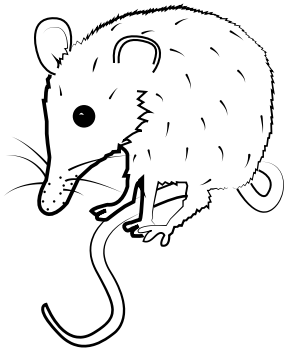


photo: Chris Tarrant ([www.aviceda.org](http://www.aviceda.org))

# Flowers have their own pollinators



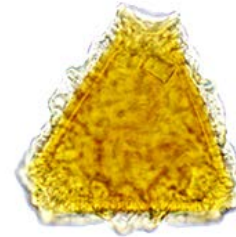
banksia



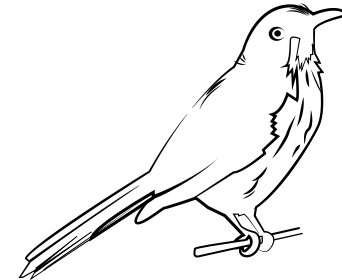
gum tree



grass tree



grevillea





© 2014, The University of Western Australia

ast1193 | version 1.0

*Be a Bush Scientist 3: Introducing flowers and pollination*

For conditions of use see [spice.wa.edu.au/usage](http://spice.wa.edu.au/usage)

Developed for the Department of Education, Western Australia



THE UNIVERSITY OF  
WESTERN AUSTRALIA  
*Achieving International Excellence*



Government of Western Australia  
Department of Education